



a new world class in heating products

PROYECTO SOLAR

04/04/13 Nueva línea paneles en Castellbisbal

- **FABRIGÁS**
- **MERCADOS**
- **PRODUCTO**
- **INSTALACIONES**

FABRIGAS



7.000 m²

70 personas

Capacidad: 150.000 m²/año

150.000 calderas/año

HISTORY

1995 1996



RS boilers

2000



Victoria boiler

2003



Sara & Nora

2004



Laura

2006



Main 3 &
Victoria 24

2007



Laura
NOx

2009



Main 4

2010



FPC



Micro CHP



Solar kit

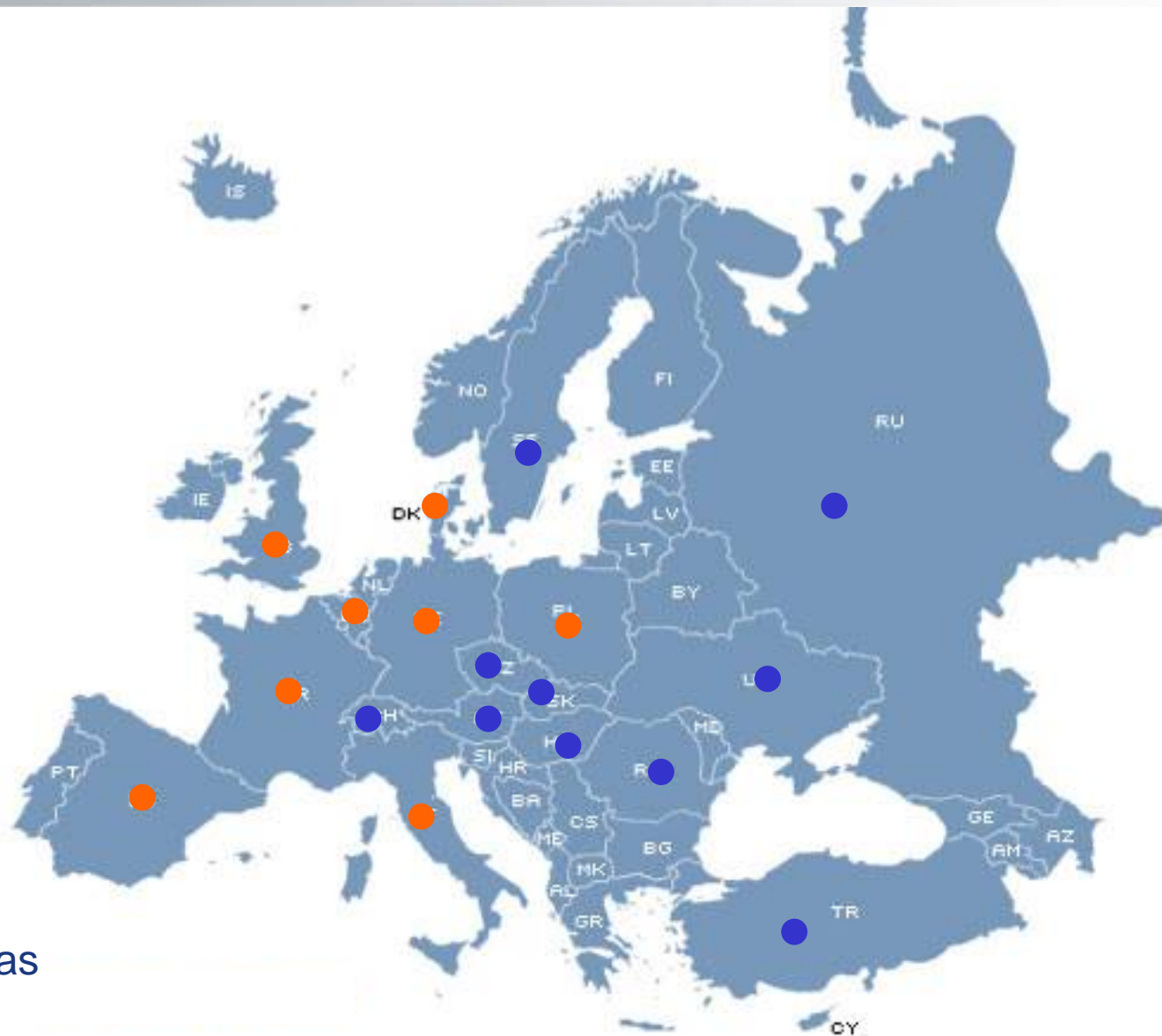


Modulating gas valve



ASIK

MERCADOS ACTUALES



● Sólo calderas

THERMAL SOLAR PRODUCTS



GENERATION



STORAGE

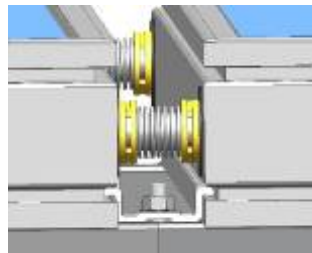


ACCESORIES




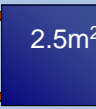
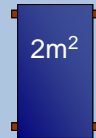
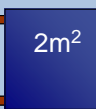
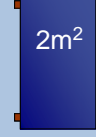
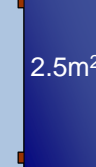
In-House range

- Absorber plate with high selective treatment, laser-welded to a meander pipework.
- 3,2 mm Low Iron glass with Matt/Matt finishing.
- 40 mm Glass-wool insulation (High end range include lateral insulation of 50mm).
- Quick hydraulic connectors.
- 10 collectors per row

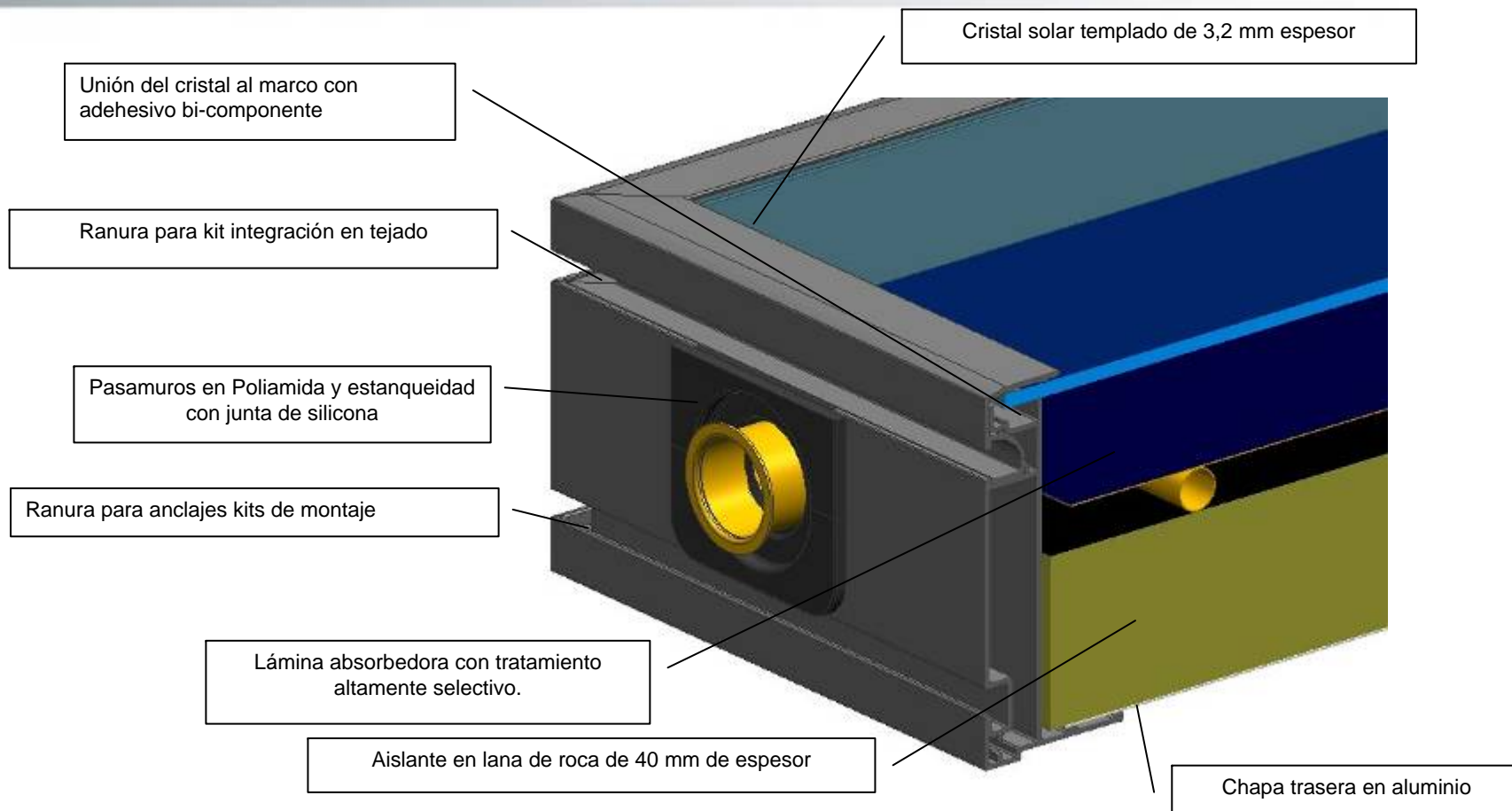


GAMA DE COLLECTORES

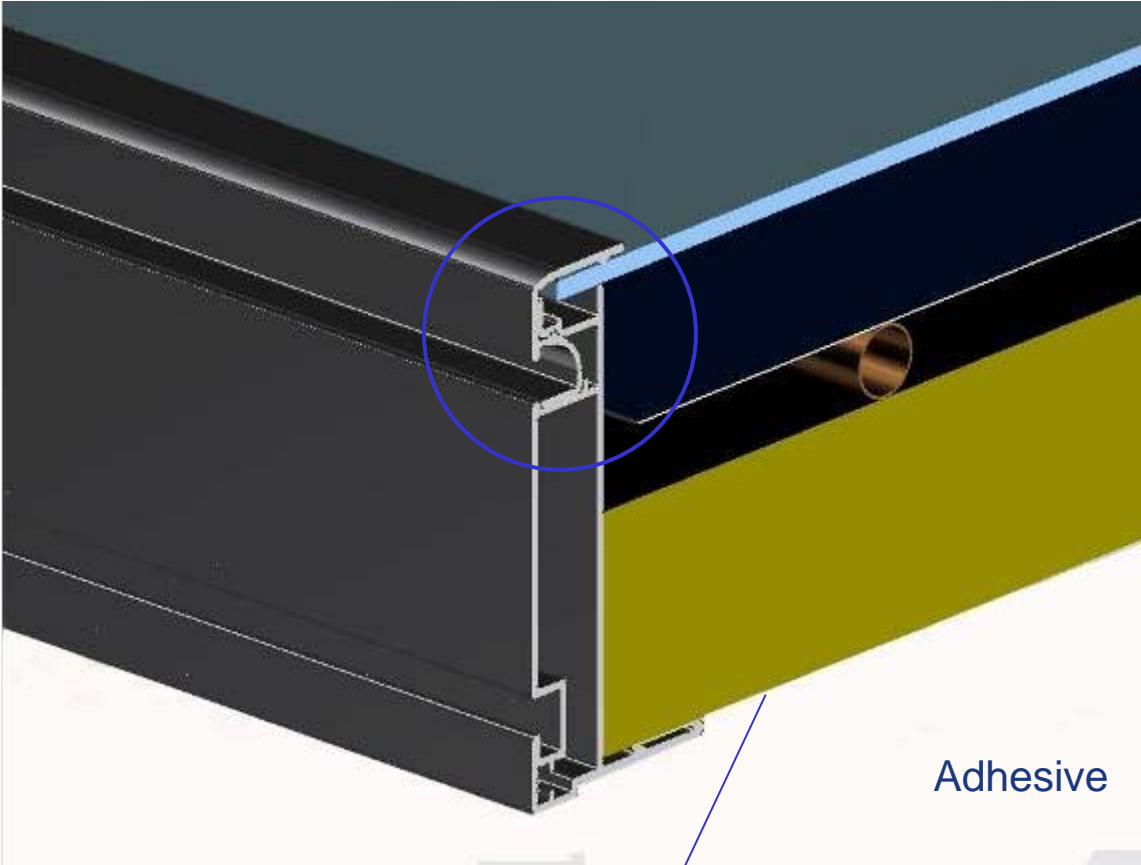


MODEL	SCHEME	DIMENSIONS	η_0	a1	a2	ABSORBER	OTHER
SOL 250		2187x1147x87	0,812	3,478	0,018	Meander	Coated frame. Quick fittings
SOL 250H		1147x2187x87	0,818	3,748	0,016	Meander	Coated frame. Quick fittings
SOL 200		1753x1147x87	0,817	3,716	0,018	Meander	Coated frame. Quick fittings
SOL 200H		1147x1753x87	0,809	3,989	0,017	Meander	Coated frame. Quick fittings
MEDITER RANEO 200		1753x1147x87	0,77	3,924	0,011	Harp	Natural frame. Straight pipe at the ends
MEDITER RANEO 250		2187x1147x87	0,765	3,653	0,012	Harp	Natural frame. Straight pipe at the ends

EL COLLECTOR



EL COLLECTOR

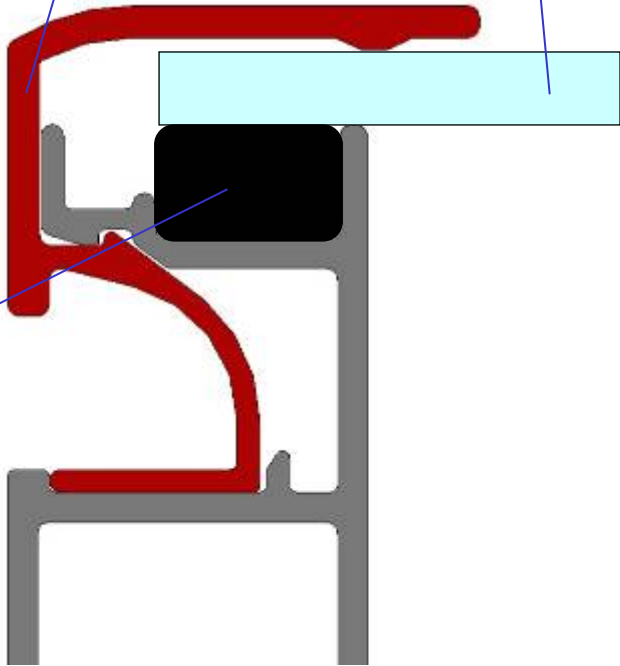


3,2 mm tempered glass
Matt/Matt

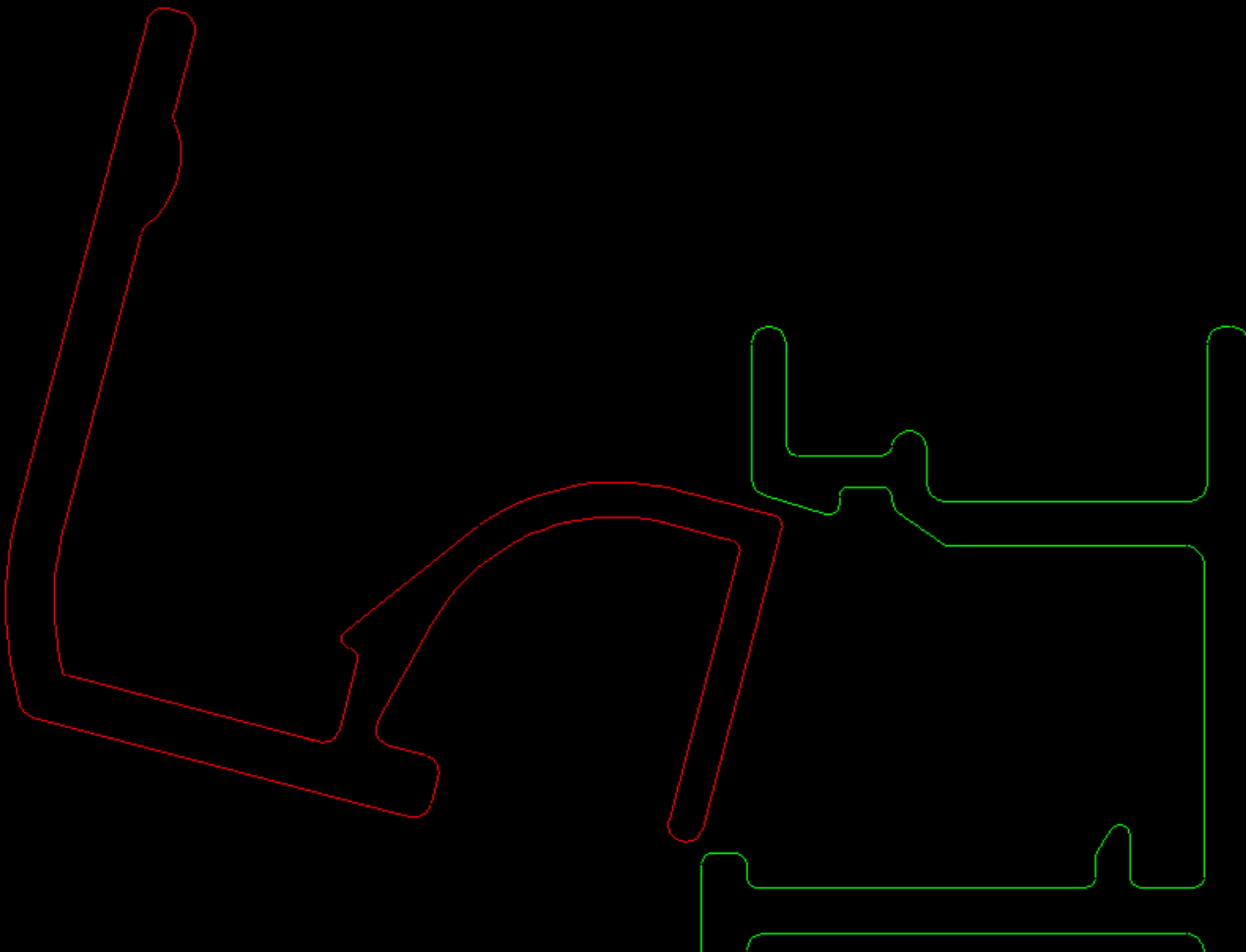
Rotational Clip

Adhesive

Aluminum back plate

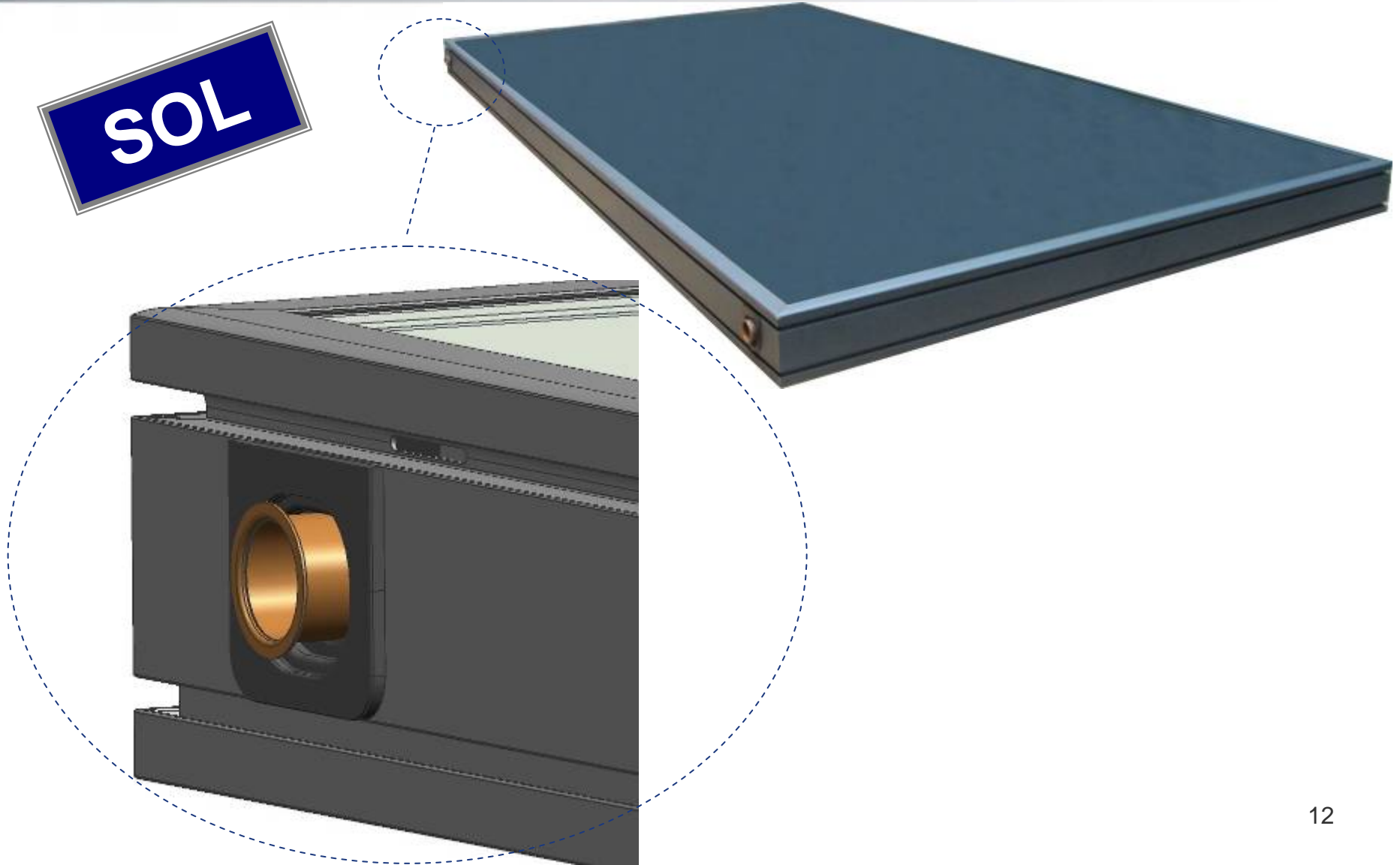


INNOVACIÓN EN DISEÑO

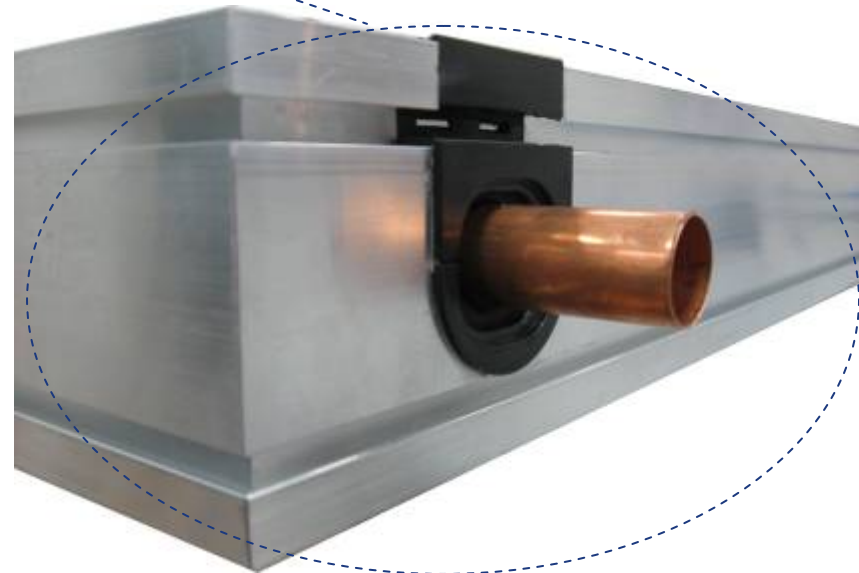
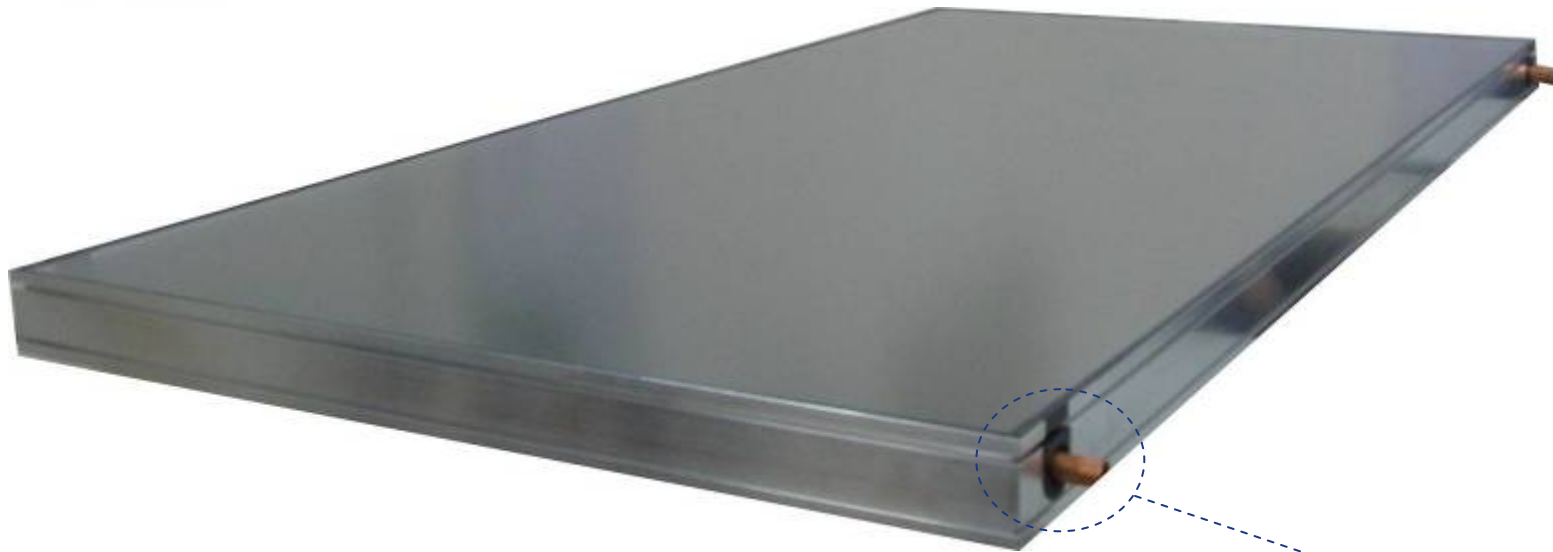


ESTÉTICA GAMA SOL

SOL



ESTÉTICA GAMA MEDITERRANEO

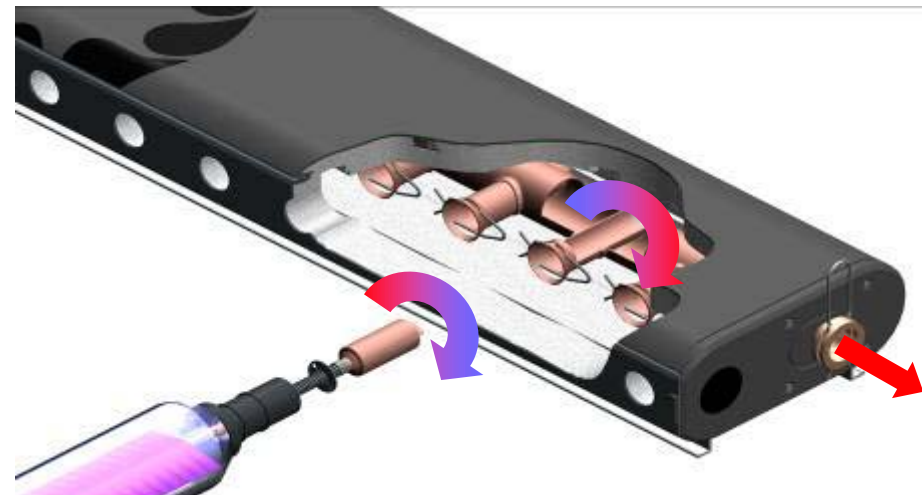


TUBOS DE VACIO (HEAT PIPE)

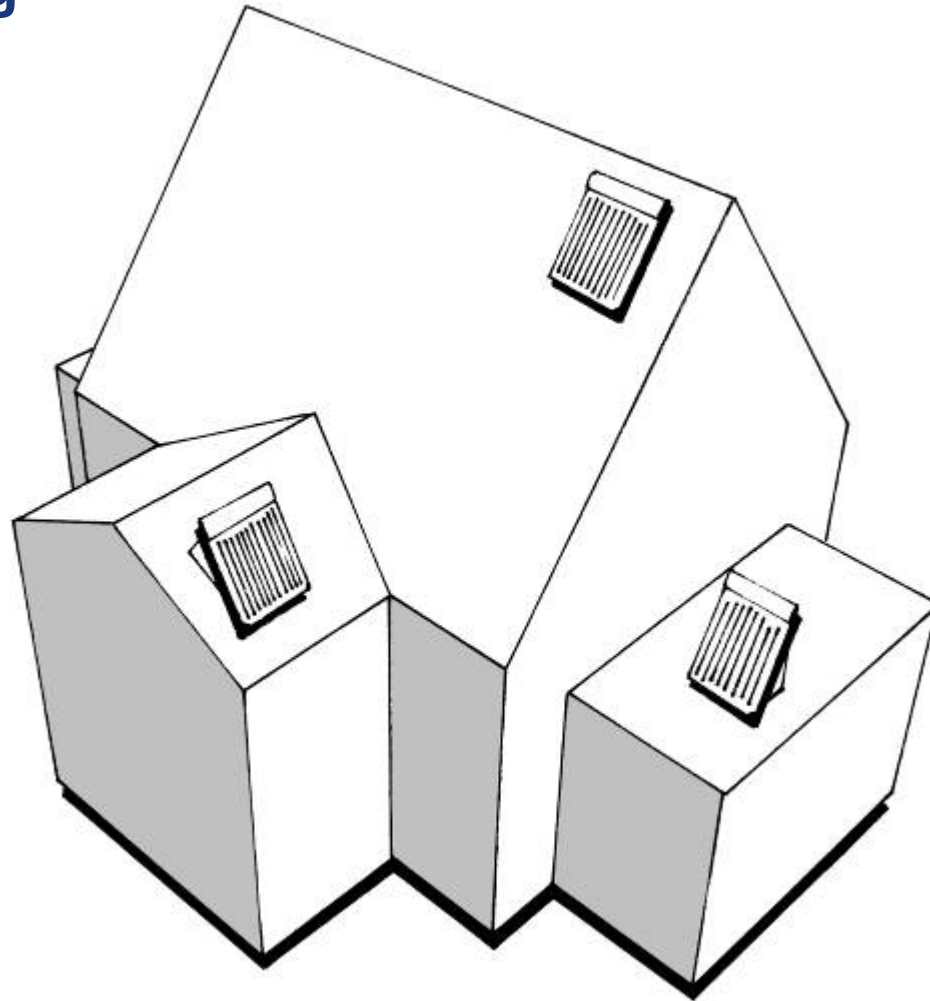


Heat Pipe

- Contains a special fluid which evaporates when heated.
- Vapour rises into condenser, transferring heat into primary solar circuit, Fluid then cools flows back down tube for cycle to be repeated.
- Absorber is sealed within an evacuated glass tube which almost eliminates convection and conduction losses.



Heat pipe mounting possibilities

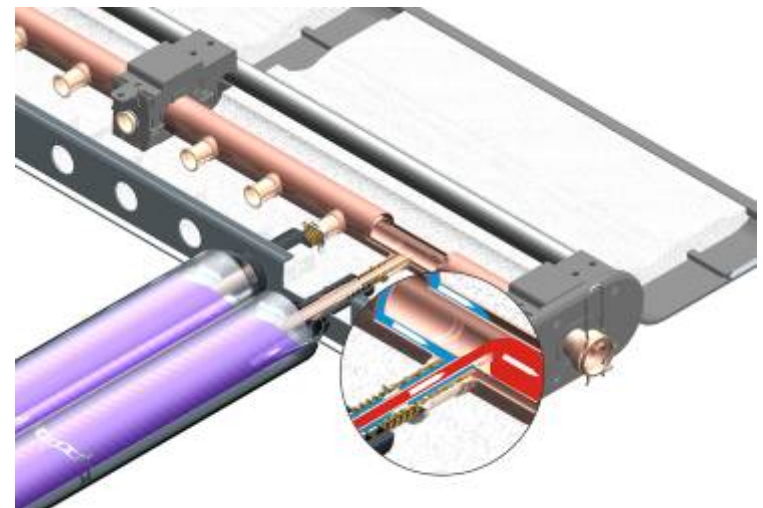


TUBOS DE VACIO (DIRECT FLOW)

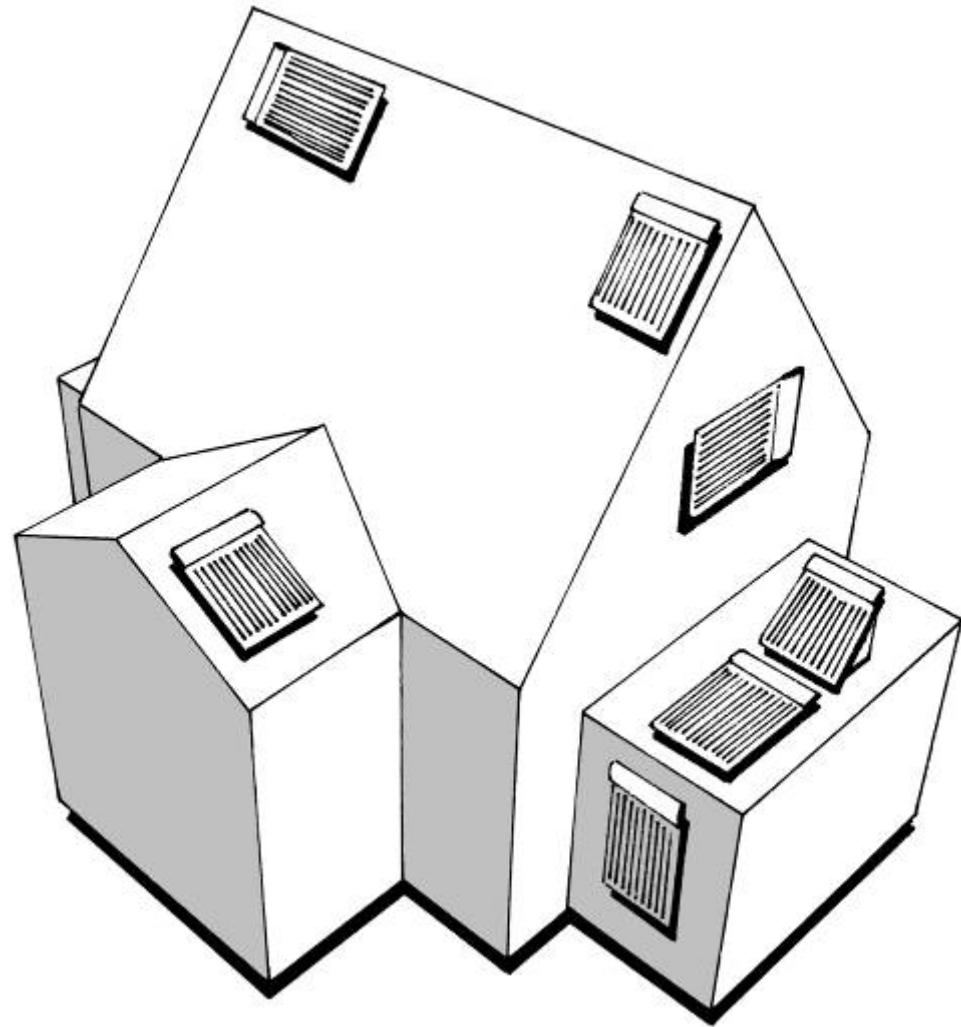


Direct flow

- Solar liquid pass through each tube where it is heated and come back to the manifold.
- Each tube needs a security valve to stop circulation to prevent overheating.
- Absorber is sealed within an evacuated glass tube which almost eliminates convection and conduction losses.



Direct flow mounting possibilities



TERMOSIFONES

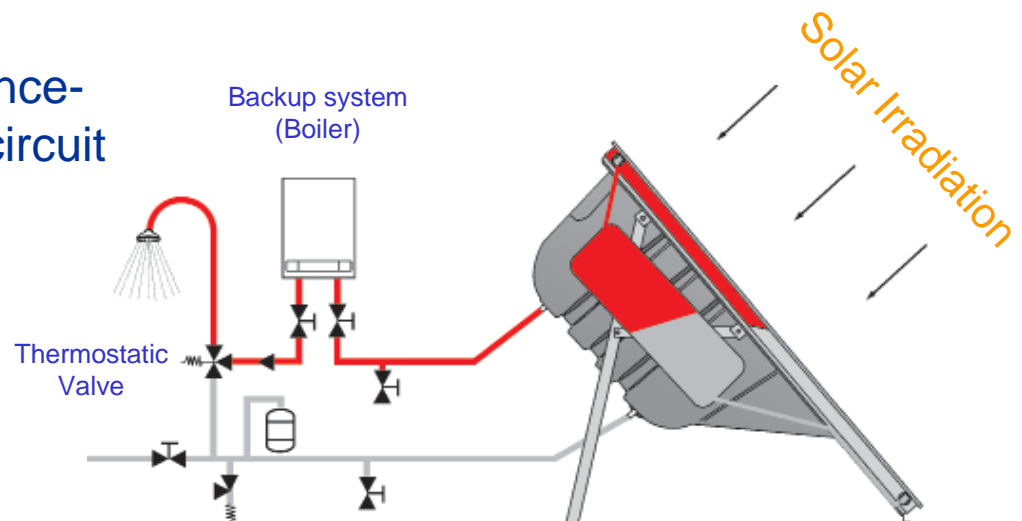
- El agua fría sanitaria se calienta a través de los colectores almacenándose en el depósito.
- La circulación de agua se realiza mediante presión de red.
- En invierno hay que prevenir de heladas.
- La circulación del líquido solar se realiza mediante convección natural.



AUTOCALOR



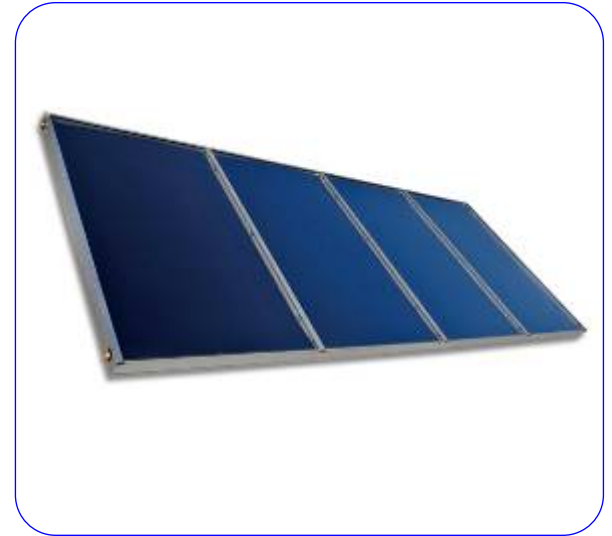
- Pre-assembled compact system for simple and quick installation
- No overheating due to the established heatpipe principle
- High yield due to optimized layering and the best possible insulated double walled boiler
- Frost proofed and maintenance-free system due to ethanol circuit



COLECTORES GRAN FORMATO

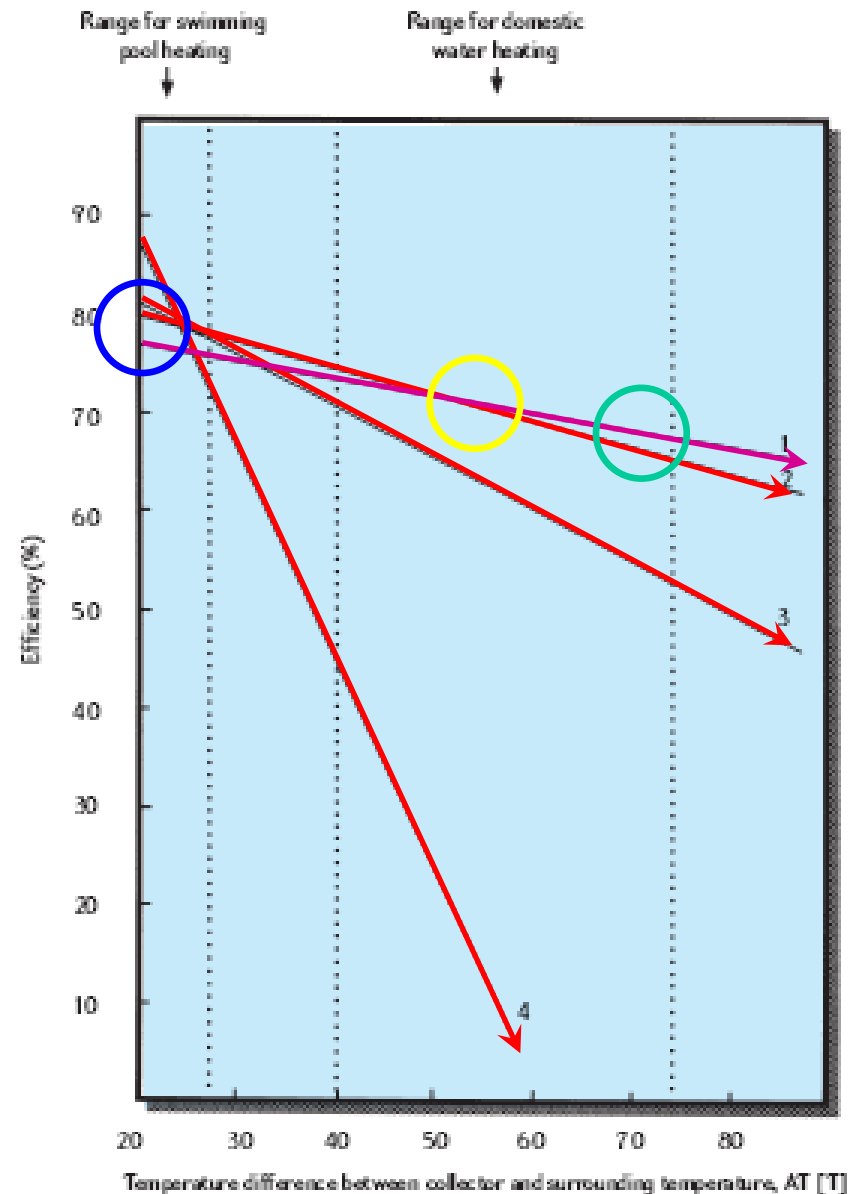


- Se pueden instalar hasta 11 colectores (110 m²) en paralelo, con una pérdida de carga mínima
- Ahorros en mano de obra durante la instalación.
- El cristal se puede reemplazar en caso de rotura.
- Aislante de 50 mm

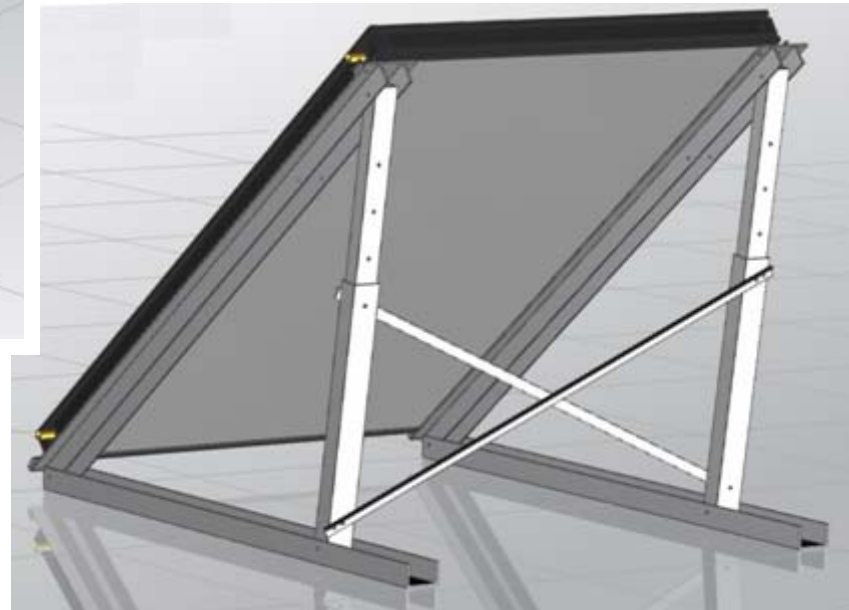
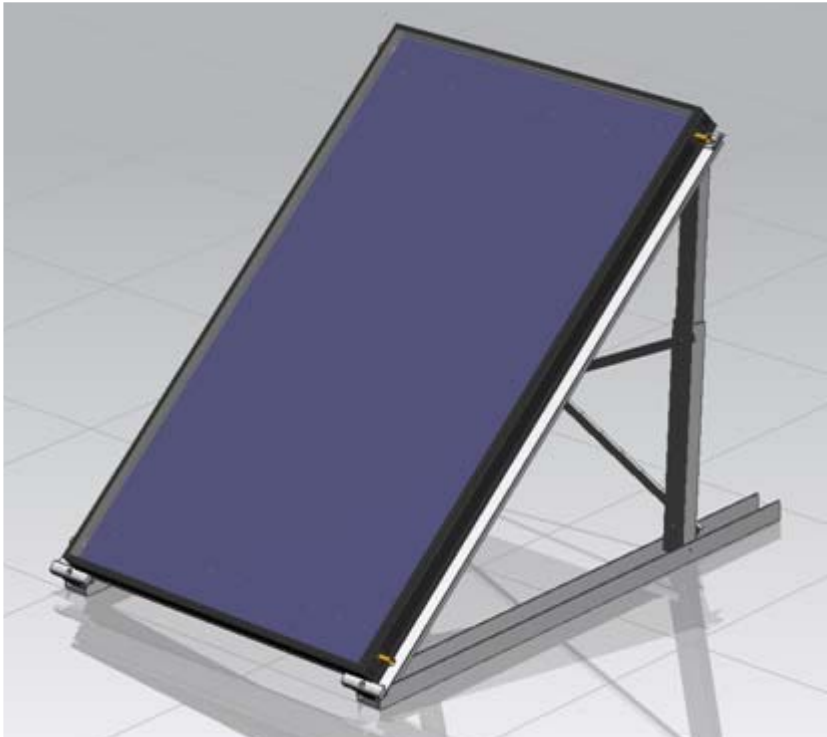


Efficiency Benchmark

1. Selective surface evacuated tube.
2. Selective surface flat plate.
3. Non-selective surface flat plate.
4. Unglazed non-selective surface flat plate.



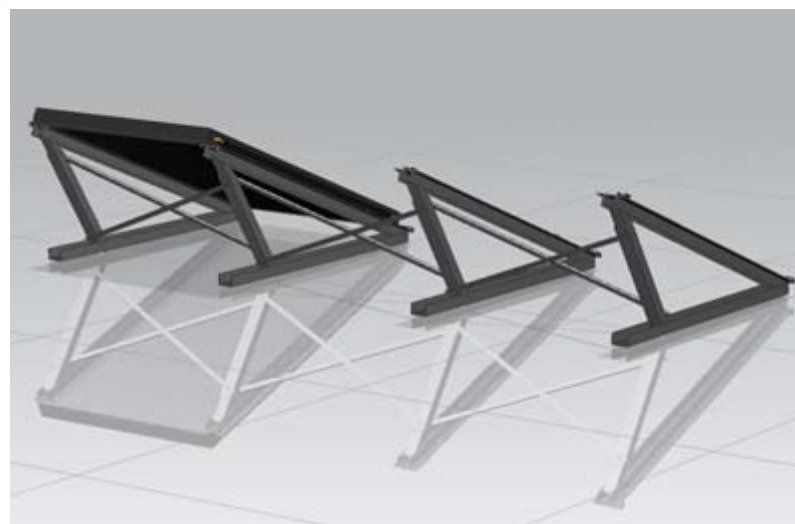
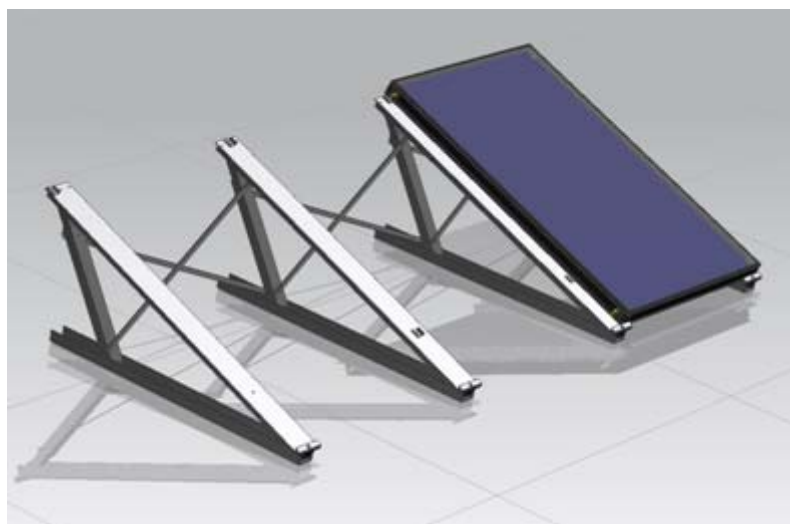
A-Frame Premium



KITS DE MONTAJE

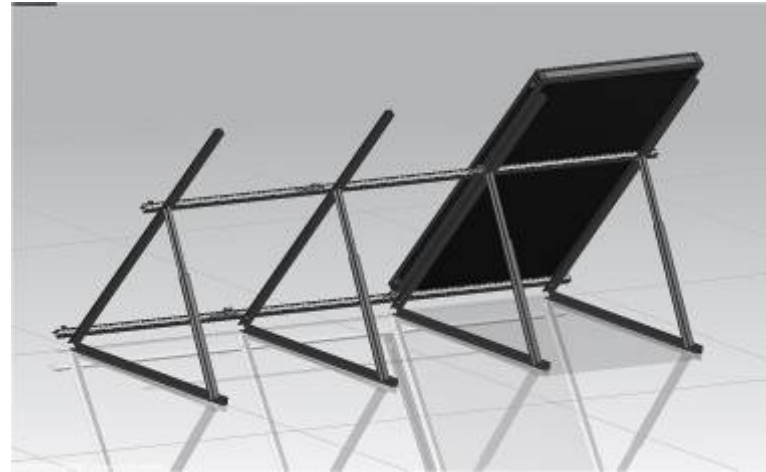
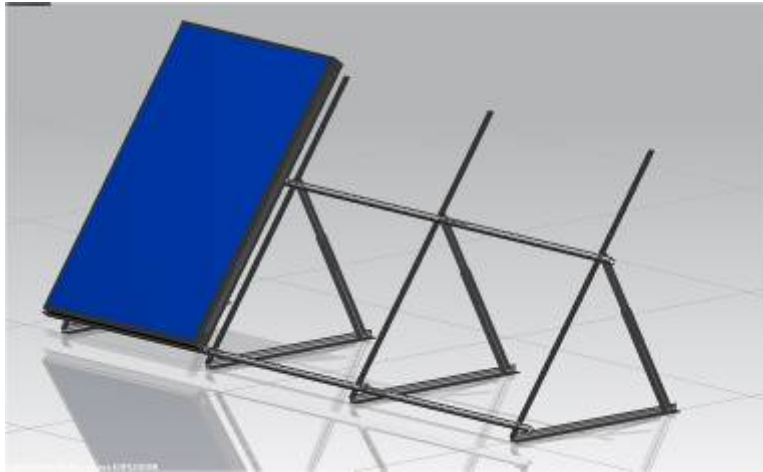


$\alpha = 55^\circ$

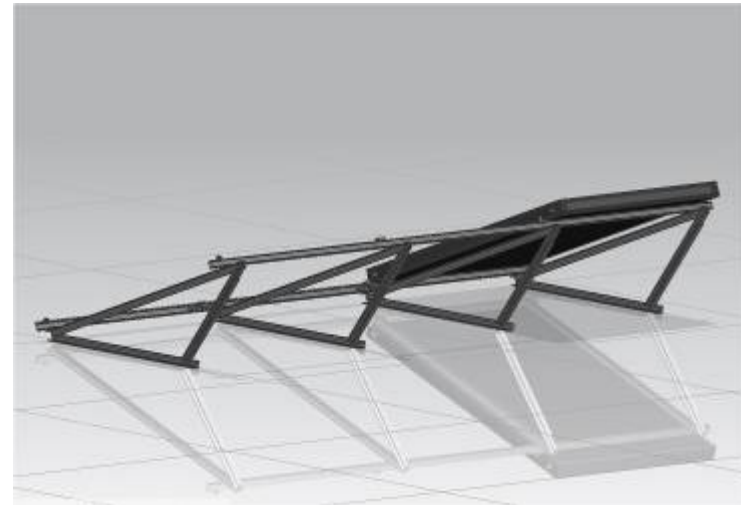
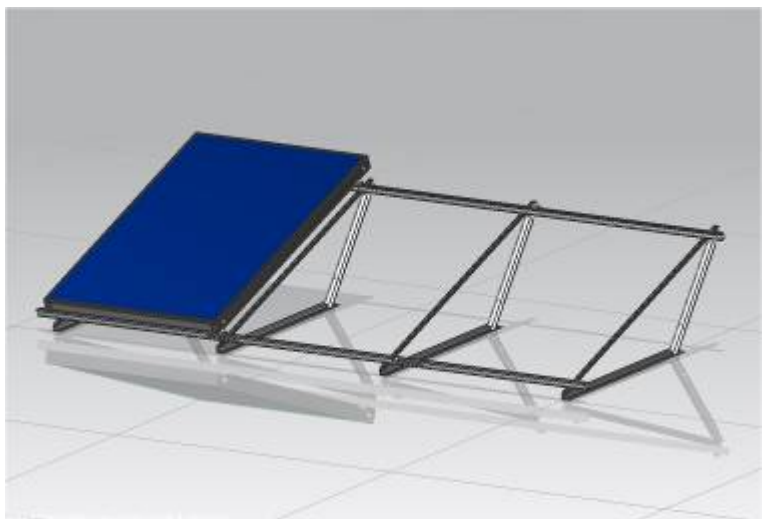


$\alpha = 20^\circ$ ²³

A-Frame Standard

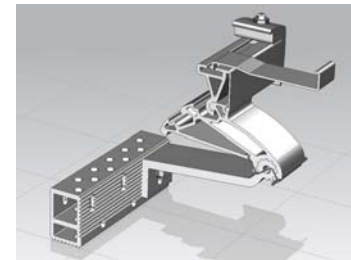
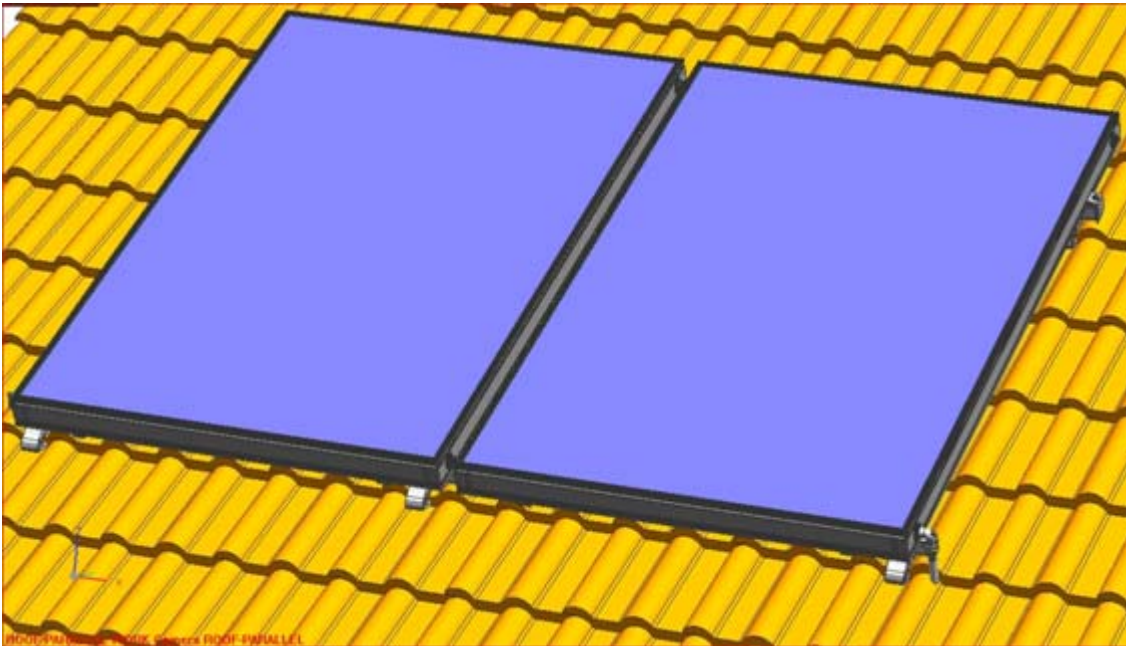


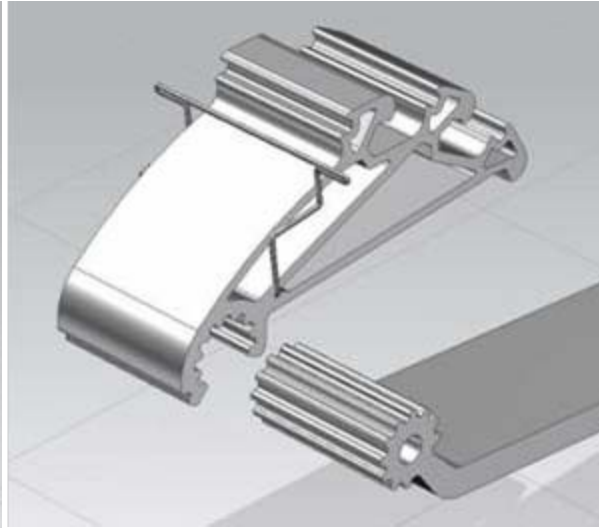
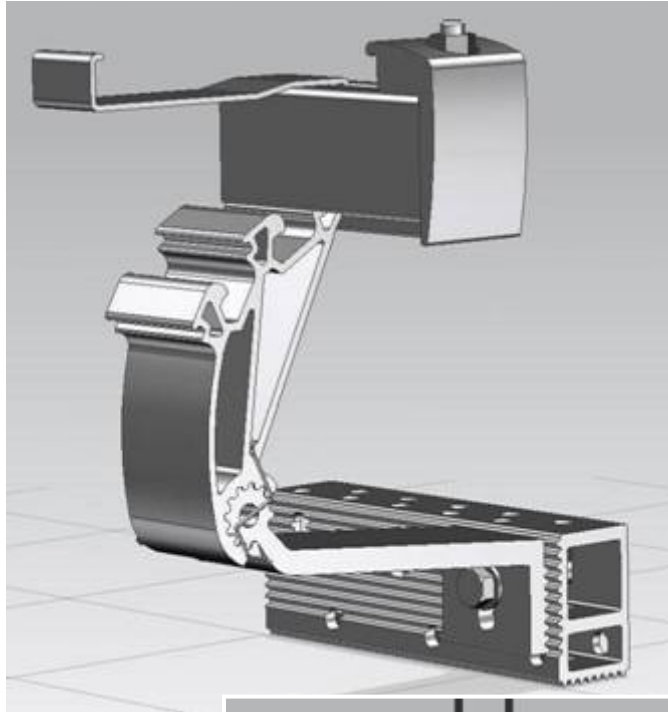
$\alpha = 55^\circ$



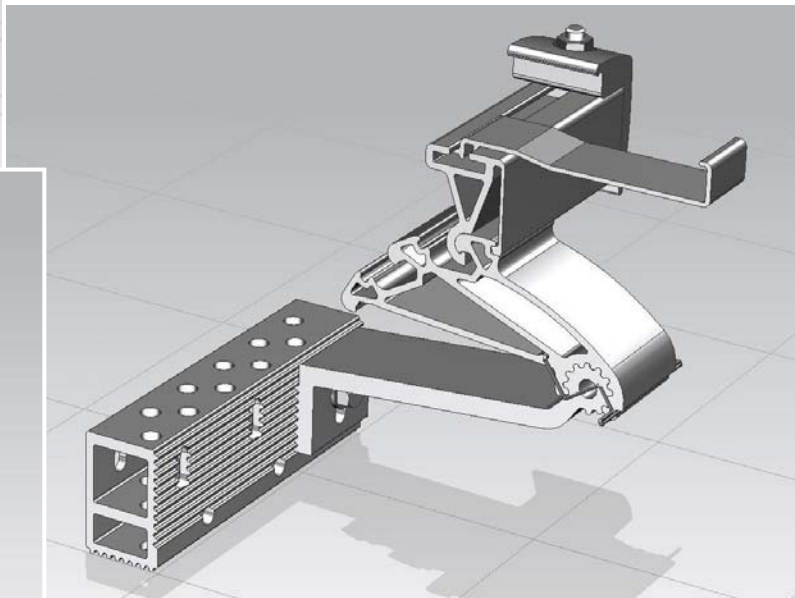
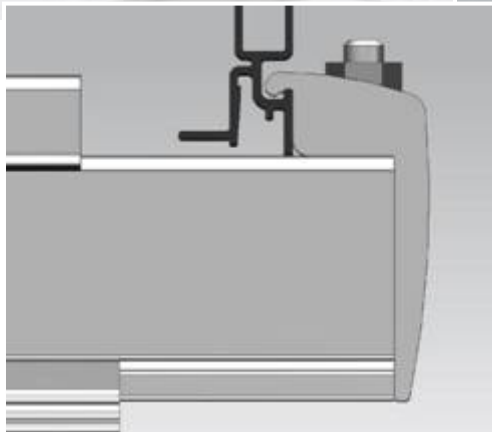
$\alpha = 20^\circ$ ²⁴

Fabrigas Range Mounting sets On roof





Fabrigas Range Mounting sets On roof



Fabrigas Range Mounting sets In roof



INSTALACIONES



Inversión 4 M€





thank you for your attention